



# Integration of switch 2000 series devices in TIA Portal version 15

## Quickstart



## Quickstart

### Integration of switch 2000 series devices in TIA Portal version 15

UM EN QS FL SWITCH 2000 TIA15, Revision 00

2019-04-29

This user manual is valid for:

Designation	Order No.	Designation	Order No.
FL SWITCH 2208 PN	1044024	FL SWITCH 2206-2SFX PN	1044028
FL SWITCH 2216 PN	1044029	FL SWITCH 2214-2SFX PN	1044030
FL SWITCH 2308 PN	1009220	FL SWITCH 2306-2SFP PN	1009222
FL SWITCH 2316 PN	1031673	FL SWITCH 2314-2SFP PN	1031683
FL SWITCH 2205	2702326	FL SWITCH 2208	2702327
FL SWITCH 2207-FX	2702328	FL SWITCH 2207-FX SM	2702329
FL SWITCH 2206-2FX	2702330	FL SWITCH 2206-2FX SM	2702331
FL SWITCH 2206-2FX ST	2702332	FL SWITCH 2206-2FX SM ST	2702333
FL SWITCH 2206-2SFX	2702969	FL SWITCH 2204-2TC-2SFX	2702334
FL SWITCH 2208-2SFX	2702871	FL SWITCH 2312-2TC-2SFP	2702910
FL SWITCH 2208C	1095627	FL SWITCH 2206C-2FX	1095628
FL SWITCH 2216	2702904	FL SWITCH 2214-2FX	2702905
FL SWITCH 2214-2FX SM	2702906	FL SWITCH 2214-2SFX	1006188
FL SWITCH 2212-2TC-2SFX	2702907	FL SWITCH 2314-2SFP	1006191
FL SWITCH 2308	2702652	FL SWITCH 2306-2SFP	2702970
FL SWITCH 2304-2GC-2SFP	2702653	FL SWITCH 2308-2SFP	2702674
FL SWITCH 2316	2702909		

108960\_en\_00

## Table of contents

1	Introduction .....	5
2	Integration of GSDML files .....	6
3	Integrating the correct switch into the project .....	7
4	Switch configuration .....	10



# 1 Introduction

This quick start guide shows step by step how you can integrate PROFINET-capable switches of the 2000 series into the Siemens TIA Portal Version 15. This makes it possible to use PROFINET benefits such as device configuration and monitoring. PHOENIX CONTACT GmbH & Co. KG offers objects for configuration and diagnostics that by far exceed the PROFINET standard.



The quick start guide applies for switches of the models 2200, 2300 or higher. Switches of this series can also be integrated if their product name does not contain "PN". For these devices, the device mode has to be set to PROFINET. This is done via the web interface or via the mode button. For additional information, refer to the user manual of the SWITCH 2000 series. The user manual is available for download at [phoenixcontact.net/products](https://phoenixcontact.net/products).

## 2 Integration of GSDML files

1. Start the manager for GSDML files.

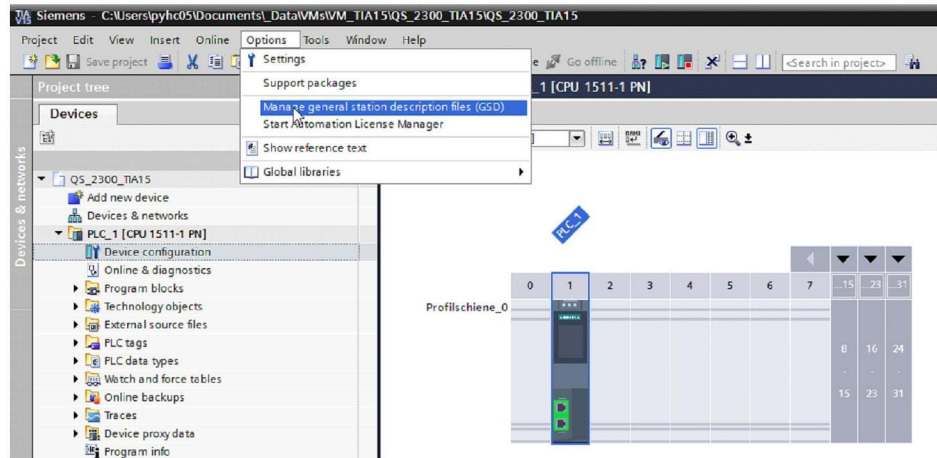


Figure 2-1 Opening the GSDML manager

2. Search for the matching GSDML files on your system and install them with a click on the "Install" button.

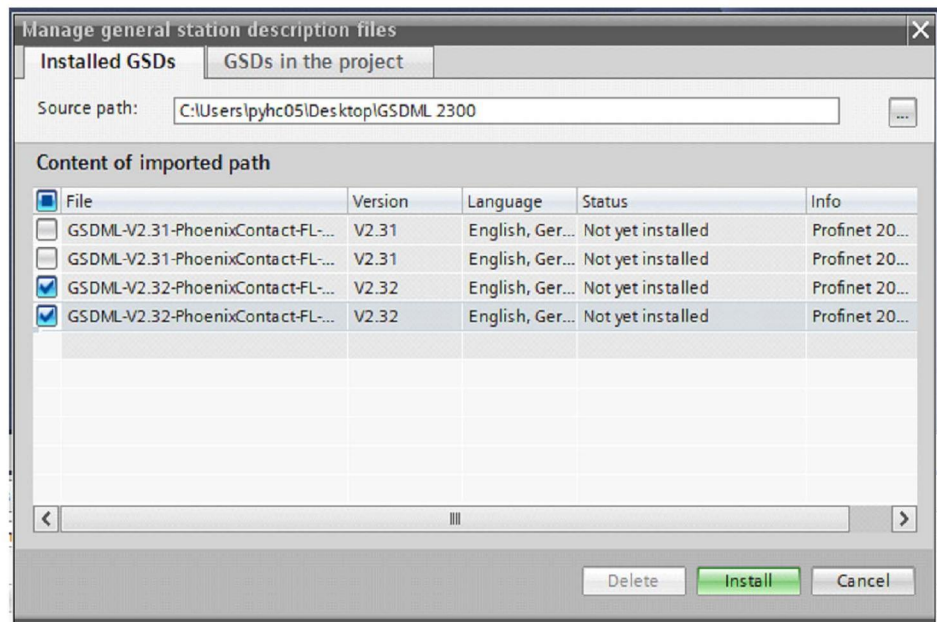


Figure 2-2 GSDML manager

### 3 Integrating the correct switch into the project

1. In the “Project tree”, select “Device configuration”.

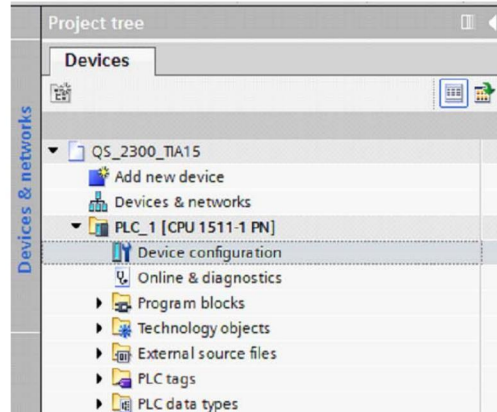


Figure 3-1 “Project tree”

2. Open the “Hardware catalog” and select the correct switch.

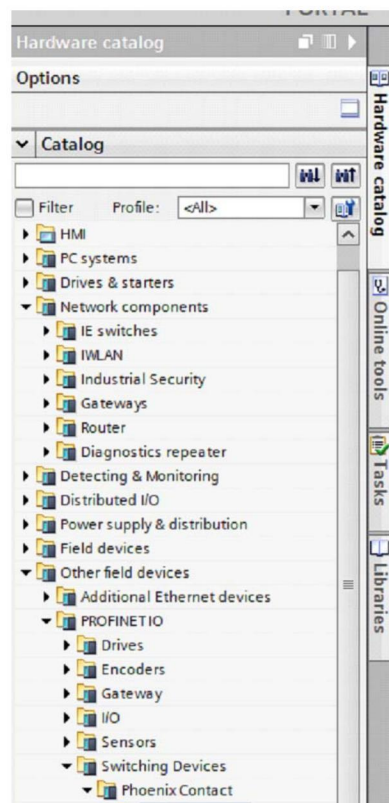


Figure 3-2 “Hardware catalog”

3. Drag and drop the switch into the “Network view”.

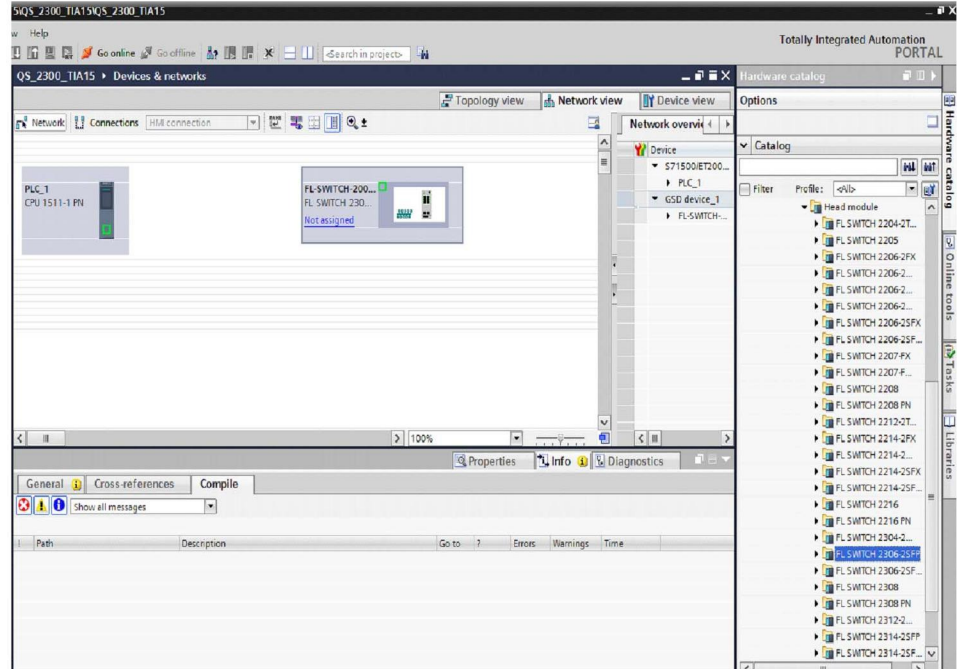


Figure 3-3 “Network view”

4. In the “Network view”, connect the switch to the controller.

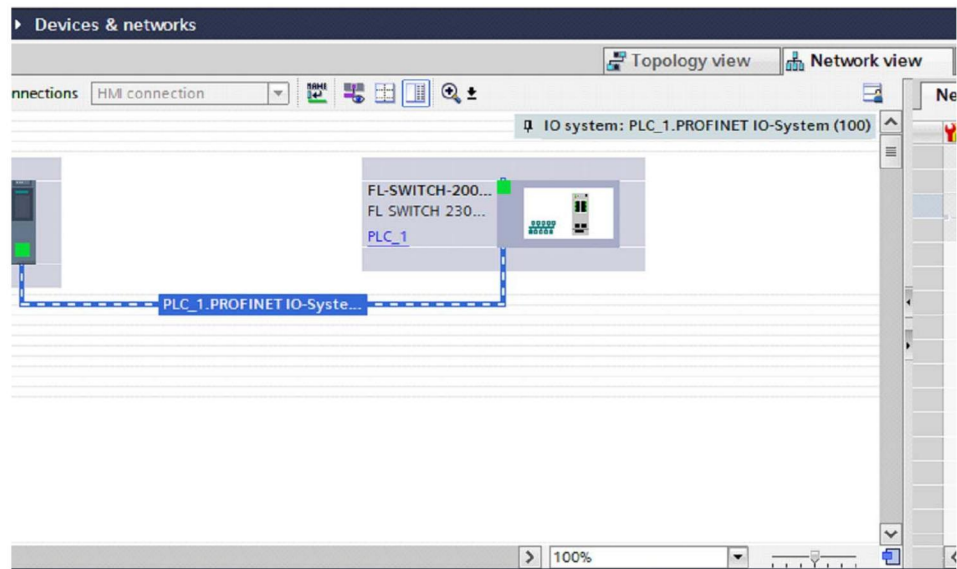


Figure 3-4 Connecting the devices in “Network view”



5. Switch to the “Topology view” tab and connect the switch to the controller.

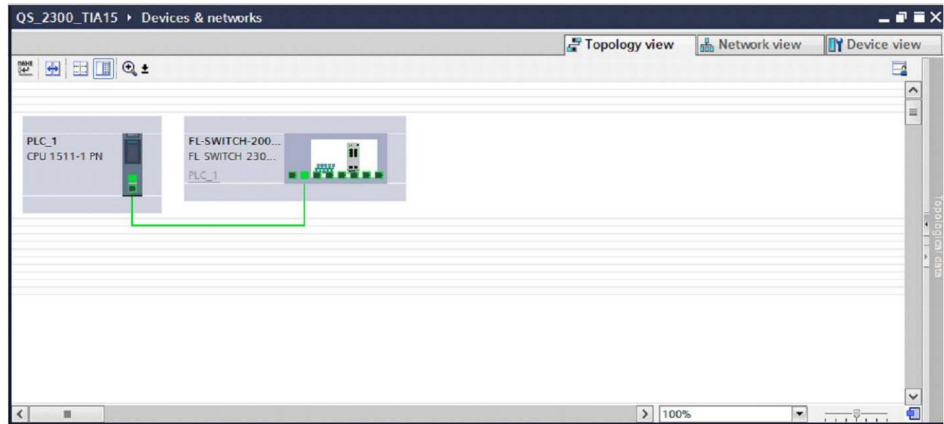


Figure 3-5 “Topology view”

## 4 Switch configuration

Go to the “Device view” tab. Here, you can parameterize the switch. The controller sends the parameters to the switch as soon as the latter has booted.

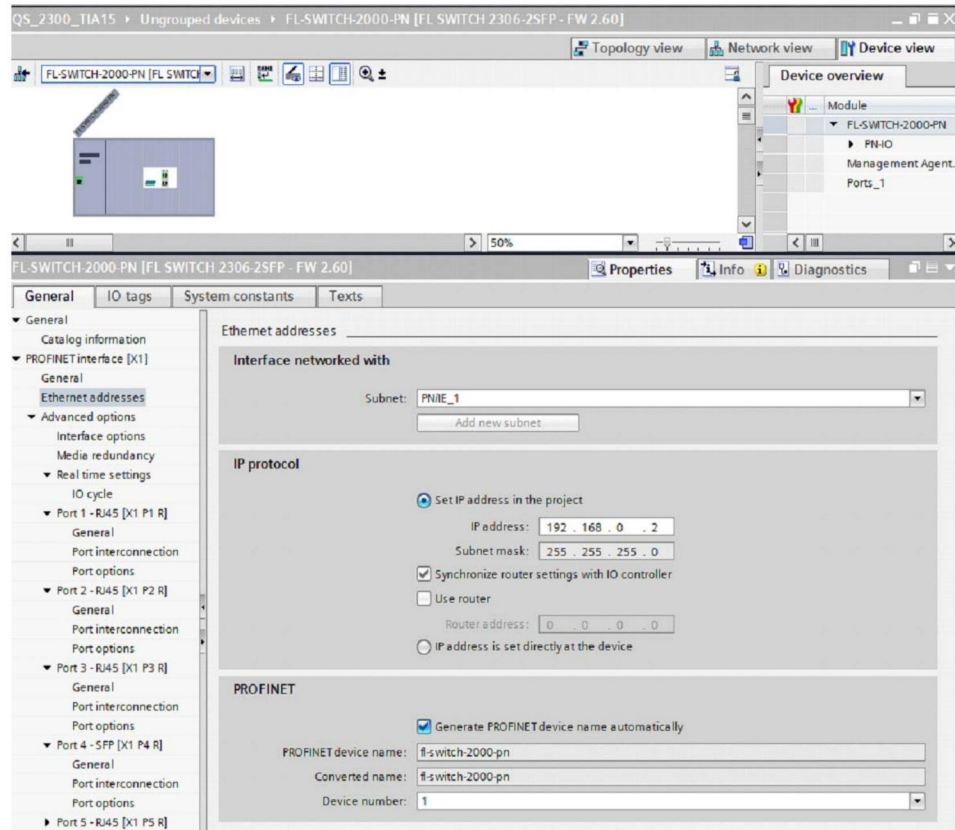


Figure 4-1 “Device view”

For additional settings, use the “Management Agent” or “Port” slot. Here, functions that exceed the PROFINET standard as well as the standards of most competitors are available.

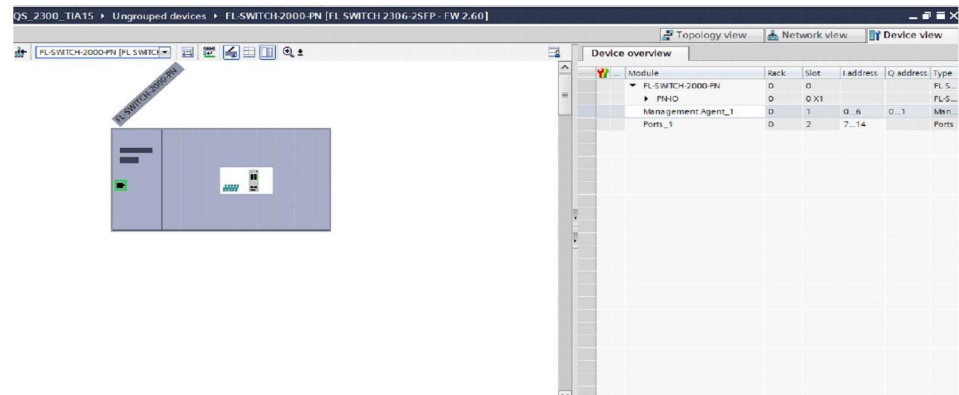


Figure 4-2 “Management Agent” slot in device view

The Management Agent slot provides additional configuration options such as RSTP configuration, configuration of the user interface and alarms:

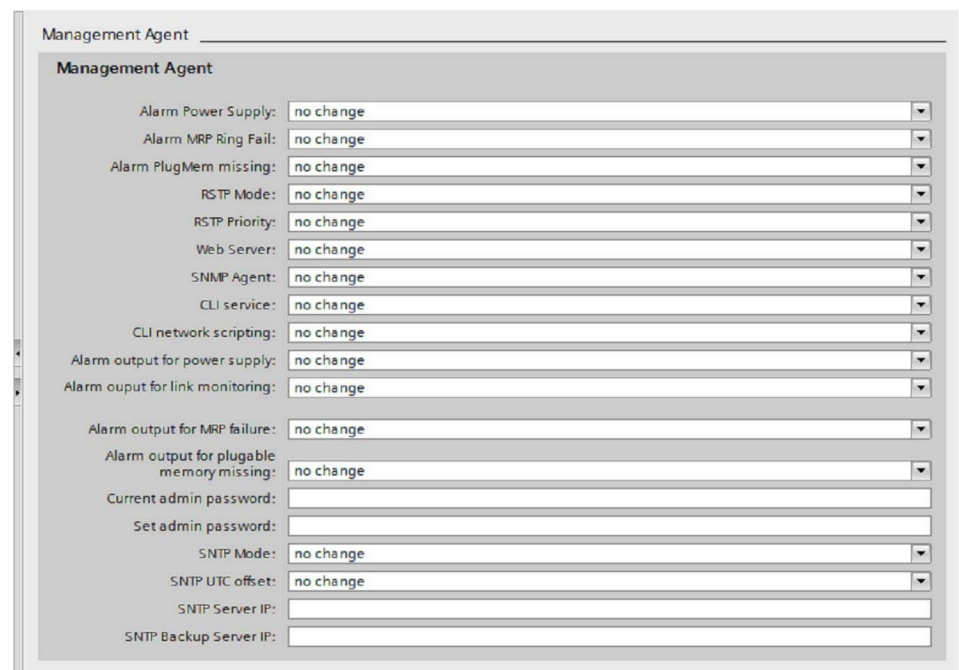


Figure 4-3 Parameters in “Management Agent” slot

On the Port slot, port-specific configurations can be implemented:

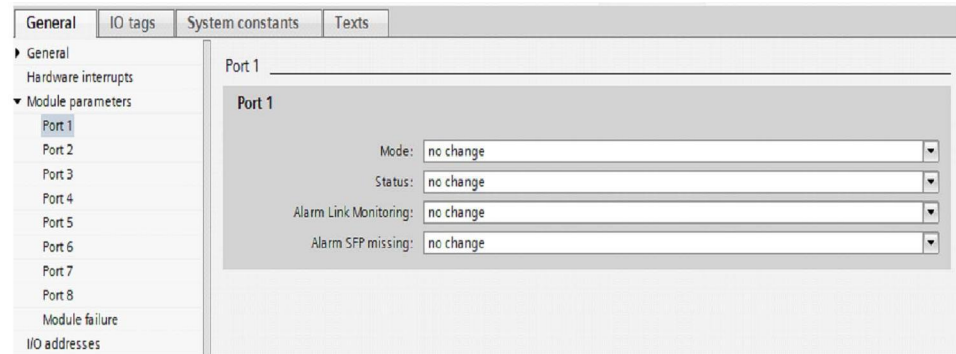


Figure 4-4 Parameters in "Port" slot

---

## Please observe the following notes

### **General terms and conditions of use for technical documentation**

Phoenix Contact reserves the right to alter, correct, and/or improve the technical documentation and the products described in the technical documentation at its own discretion and without giving prior notice, insofar as this is reasonable for the user. The same applies to any technical changes that serve the purpose of technical progress.

The receipt of technical documentation (in particular user documentation) does not constitute any further duty on the part of Phoenix Contact to furnish information on modifications to products and/or technical documentation. You are responsible to verify the suitability and intended use of the products in your specific application, in particular with regard to observing the applicable standards and regulations. All information made available in the technical data is supplied without any accompanying guarantee, whether expressly mentioned, implied or tacitly assumed.

In general, the provisions of the current standard Terms and Conditions of Phoenix Contact apply exclusively, in particular as concerns any warranty liability.

This manual, including all illustrations contained herein, is copyright protected. Any changes to the contents or the publication of extracts of this document is prohibited.

Phoenix Contact reserves the right to register its own intellectual property rights for the product identifications of Phoenix Contact products that are used here. Registration of such intellectual property rights by third parties is prohibited.

Other product identifications may be afforded legal protection, even where they may not be indicated as such.

---

## How to contact us

### Internet

Up-to-date information on Phoenix Contact products and our Terms and Conditions can be found on the Internet at:

[phoenixcontact.com](http://phoenixcontact.com)

Make sure you always use the latest documentation.

It can be downloaded at:

[phoenixcontact.net/products](http://phoenixcontact.net/products)

### Subsidiaries

If there are any problems that cannot be solved using the documentation, please contact your Phoenix Contact subsidiary.

Subsidiary contact information is available at [phoenixcontact.com](http://phoenixcontact.com).

### Published by

PHOENIX CONTACT GmbH & Co. KG

Flachsmarktstraße 8

32825 Blomberg

GERMANY

PHOENIX CONTACT Development and Manufacturing, Inc.

586 Fulling Mill Road

Middletown, PA 17057

USA

Should you have any suggestions or recommendations for improvement of the contents and layout of our manuals, please send your comments to:

[tecdoc@phoenixcontact.com](mailto:tecdoc@phoenixcontact.com)